



THE GREENS

TOWNHOME COLLECTION



\$549,950

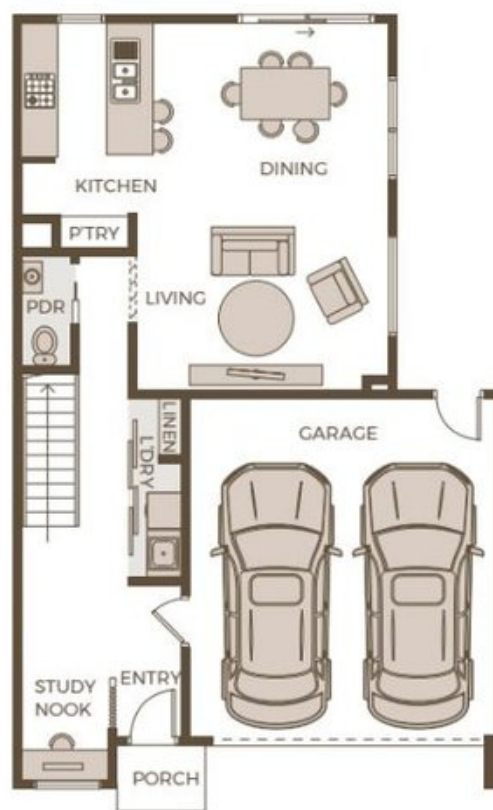
Lot 4641

House Size: 222m²

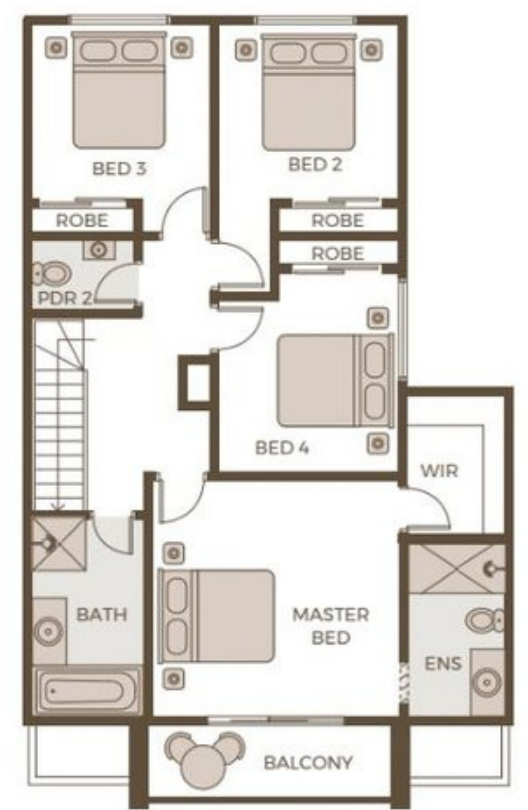
4 BED | 2 BATH | 2 CAR

A once in a lifetime opportunity to live on the expansive greens of the Mandalay Golf Course in a new, low maintenance SOHO Living home. You'll spend more time enjoying the breathtaking views of the fairways from your balcony and less time maintaining your home

This exclusive release is nestled in Mandalay a lifestyle resort-living development quite unlike any other in the north of Melbourne. Just forty minutes drive from the centre of the City, Mandalay offers an idyllic lifestyle with wide-open spaces, a signature 18 hole golf course and the exclusive Club Mandalay lying at the very heart of this fabulous community.



GROUND FLOOR



FIRST FLOOR

This plan and information is indicative only and may vary without notice. Furniture or vehicles are not included in the sale of the lot. For detailed floorplans please refer to contract of sale.

SOHO
LIVING

 **mandalay**